



ECCENTRIC LUXURY ON THE BEACH







# CARMEL

GRECOTEL BOUTIQUE RESORT



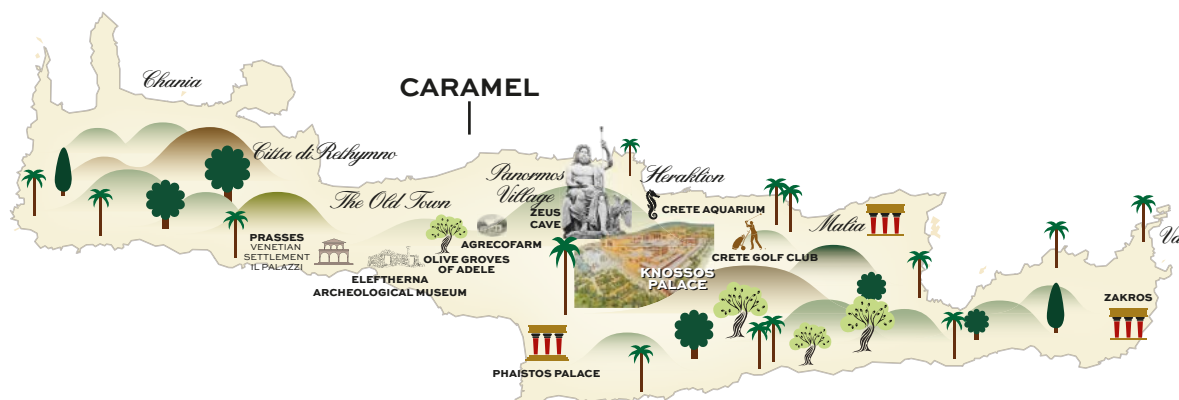
THERE IS A CAPTIVATING FEELING WHEN YOU ENTER INTO THE CARMEL  
IT IS PRETTY & PRIVATE AND SO PETITE YOU THINK YOU COULD  
HOLD IT IN YOUR HANDS.

Caramel is a suites & villas boutique retreat in an idyllic beachfront setting. It oozes retro glamour through its gleaming hallways, fabulous terraces, magnificent guestrooms and personalized service. Caramel feels deeply personal in its opulent & exceptionally private spaces.



# CAMEL

GRECOTEL BOUTIQUE RESORT



## IDEAL FOR

All ages

## LOCATION

Rethymnon, Crete. Rethymno town: 9 km • Airport of Heraklion: 78 km  
• Airport of Chania: 76 km

## ACCOMMODATION

Total Rooms 69 • Suites 54 • Villas 15

## BEACH & POOLS

Directly on a 300m sandy beach • 1 Large Seawater Pool with hydromassage

## FEATURES

Elixir Wellness Center & Fitness room with Technogym cardio gym equipment • Grecoland Kids Club • Fashion Boutique & Mini Market • Business Center • Library • TV Room

## ACTIVITIES

• Watersports • Sports & Gymnastics • Biking

## AWARDS

• TUV Austria Hellas • Top Quality 2019 by TUI • Holiday Check Recommendation 2022 by Holiday Check reviewers • Excellence Award 2023 by Tripadvisor • Travelife Gold 2021-2023 • TUI Umwelt Champion 2019 • TUI Holly 2019 Best Hotel Eastern Mediterranean • Guest Review Award 2019 Booking.com • Greek Breakfast by The Hellenic Chamber of Hotels • Green & Fair Hotel 2023 by TUI

## MEAL PLANS

### Breakfast

A stunning variety of choices, ranging from the lavishness of American-style buffet to the elegance of exclusive à la carte options with local delicacies. Early & Late breakfast as well as In-room breakfast services are available upon request.

### Halfboard

A well-tended half board concept offering a large variety of dishes

and tastes in lavish breakfast and dinner buffets or choice of hotel's a la carte restaurant with credit allowance of 20 € per adult & 10 € per child, reservation required. Available for Standard room & Suite accommodation.

### The Dine Club Half-Board Programme

An exciting half board dining concept with many options and extra advantages, including credit in selected restaurants in Grecotel Resorts around Crete and free dining for kids. Enjoy free breakfast and lunch or dinner, plus credit allowance in amazing venues. For every 7 nights stay, indulge in two free à la carte dinners, including the option of one in the famous Agreco Farm. Drinks & Beverages not included. Available for Villa Accommodation.

See more at [caramel.grecotel.com/dineclub](http://caramel.grecotel.com/dineclub)

## RESTAURANTS & BARS

### BREAKFAST

#### Caramel The Restaurant, Med. Buffet Restaurant

Show cooking, gourmet buffet with fitness food, Cretan corner with traditional products and local herb teas. Early/Late Continental Breakfast.

### LUNCH

#### Confetti Pool Lounges, Poolside Brasserie

An assortment of delicious Greek and International lunches, snacks, sandwiches and farm fresh salads. À la carte menu.

### DINNER

#### Caramel The Restaurant, Med. Buffet Restaurant.

Mediterranean, vegetarian & international dishes.

#### Gourmet à la carte Restaurant, Med. à la carte Restaurant

Seafood & mouth-watering Mediterranean selections. Late dinner. Kids' Menu available

### BARS

#### Panther Lobby Bar

Impressive lounges and terraces with stunning pool views.

#### Confetti Pool Lounges All day long

**IN ALL RESTAURANTS** Vegan / Vegetarian / Gluten Free options, as well as Vegan and BIO wines in all restaurants.

**ROOM SERVICE** 24hrs at an extra charge.

**NOTE:** Restaurants are subject to availability and weather conditions, reservations required in all à la carte restaurants.



The caramel-coloured beach is tranquil and home to caretta caretta sea turtles.

## KIDS

**Kids Go Free** Children up to 12 years old enjoy free kids dining in the "Tasty Corner", free Grecoland kids' programme, GrecoTeens and outdoor creative activities.

**GrecoBabY, 0-3 yrs.** Pre-arrival order of baby equipment, baby food order. • Baby-sitting, extra charge

**Grecoland Kids Club, 4-12 yrs.** 6 times per week 10.00-18.00. Children under 4 yrs. must be supervised at all times by a parent or guardian.

**GrecoTeens Activities, 13+ yrs.** From mid June - mid September

**Free Kids Dining, 3-12 yrs.** The Dine Club offers exclusively to children up to 12 years an ALL IN-Dining experience: All Day favorite snacks at Grecoland (11:00 -17:00) Tasty corner lunch at Main restaurant (12.30-14.00) A La Carte kids' dining in designated restaurants with special kid's menu including juices & refreshments or credit allowance for regular menu orders.

## SPA & WELLNESS

**Spa Facilities** One massage room with two massage beds • Beauty Salon • Gazebo Open-air Massage • Fitness room with Technogym cardio gym equipment • Body & Soul Elixirs • Massages & Therapies • Face Treatments • Special Therapies • For Two

**Gym** Operation hours: 07.00-20.00 Fitness room with Technogym equipment including: Treadmills, Bikes, Crossover machine, Leg cure/leg extension, Press and overhead press, Adductors, Shoulder press, Abdominal benches, Dorsals benches, Weights benches, Much fitness machine, Pegasus strength back machine, Technogym weights, Kettle belts.

## RECREATION

**Gymnastics** Fitness room with Technogym cardio fitness equipment, Morning Gymnastics, Yoga, Pilates

**Sports** Table Tennis, Darts, Boccia. Extra charge: Professional motorized Watersports

**Outside The Hotel Nearby:** PADI Underwater Diving School, Mountain Bike Center, Horse Riding, Crete Golf Club (89 km). At nearby Grecotel Creta Palace: 2 Tennis Astroturf Courts, coaching, practice, tournaments.

**E-bike service** Includes digital tour, GPS and other in-app services (extra costs apply). T&C: Cost depends on rental duration. The service will be available daily from 7 am - 11 pm. The rental procedure as well as the acceptance of the Terms & Conditions and the payment will be automated and completed by the guest.

**Watersports** Sailing, Waterskiing, Pedal Boats, Canoes, Banana & Rings, Wakeboard

**Evening Entertainment** Live Music Performances

## ENVIRONMENTAL POLICY

- TUI Environment Champions • Travellife Gold award 2021-2023
- Waste Recycling • Recycling • Energy and water saving measures, ecological cleaning agents • Protection of endangered sea turtles Caretta-Caretta • In hotel Environmental Activities.

## SERVICES

**WiFi** Free of charge full WiFi coverage in all hotel areas and guest rooms.

**New Grecotel Mobile App** proposes a world of information regarding your stay, online-reservation at the à la carte restaurants and services in and out of the hotel.

**24h WhatsApp Concierge** Designated staff members are at call on WhatsApp, to assist guests on everything they may desire.

**Multilingual personnel** English, German, Russian, French, Greek.

**Medical Services** 24hr Medical cover, Doctor on call -extra charges may apply depending on guests' travel insurance. • Pharmacy at 500 m • Medical Centre at 500 m • Hospital at 9 km.

**Transport** Car rental & motorbike rental at the Reception • Bus stop outside the Hotel

**Taxi Service on request** • to Rethymnon, 9km • to Heraklion Airport, 78km • to Chania Airport, 76km.

**Shopping** "Sunstores" Market/Souvenir Shop

**Money** All major Credit Cards are accepted • ATM outside the hotel • Nearest Bank at 9 km

**Voltage Current** 220V.

**Mobility Impaired Guests**

Due to the hotel's layout, most departments and rooms are not accessible to persons with mobility problems.

**Animals** Dogs that weigh up to 8kg are allowed in selected villas with private gardens. Restrictions apply. Service animals are allowed to accompany their handler in all hotel premises. View pets policy at [grecotel.com/pets-policy](http://grecotel.com/pets-policy)

**Official Hotel Categorization** Five star Resort

**Contact details** GR – 74 100 Adelianos Kampos, Rethymnon, Crete, TEL.: (+30) 28310 71803, E-mail: [reservations.cb@grecotel.com](mailto:reservations.cb@grecotel.com)





#### All room types include:

- Mini-bar with international brands
- Complimentary tea & coffee facilities
- Nespresso bar concept in guest accommodation: Nespresso Machine with 2 complimentary pods per adult/ per day
- In-room safe
- Room service 24h
- Laundry services
- Luxurious beds & linens
- Hairdryer
- Bathrobes & slippers
- Deluxe bathroom amenities
- Complimentary WiFi
- LCD TV

#### Additionally in all villas:

- Complimentary Full Set Bar in selected villas
- Pillow menu

### ACCOMMODATION CHART

ROOM TYPES	LOCATION	SIZE	SLEEPS	VIEW
Bungalow Sea View	Garden Area	28m <sup>2</sup>	2	Sea
Caramel Junior Suite	Main House, Atrium Wing	40m <sup>2</sup>	2	Garden & Pool
Junior Suite Sea View	Main House	35m <sup>2</sup>	2	Sea
Open Plan Junior Suite Private Garden	Main House	40m <sup>2</sup>	2+1	Garden
Family Suite Main House	Main House, Atrium Wing	50m <sup>2</sup>	2+2	Garden & Parking
Caramel Luxury Suite with Private Outdoor Hydromassage Bathtub	Main House	50m <sup>2</sup>	2	Sea
Open Plan Bungalow Suite	Garden Area	50m <sup>2</sup>	2+1	Garden
Open Plan Bungalow Suite with Private Outdoor Hydromassage Bathtub	Garden Area	50m <sup>2</sup>	2+1	Garden
Maisonette Garden View	Garden Aea	45m <sup>2</sup>	2+1	Garden
Maisonette 1st Row Sea view	Beachfront, 1st Row	45m <sup>2</sup>	2+1	Sea
Luxury Bungalow Suite Garden View	Garden Area	55m <sup>2</sup>	2+2	Garden
Luxury Bungalow Suite with Private Outdoor Hydromassage Bathtub	Garden Area	55m <sup>2</sup>	2+2	Garden
2 Bedroom Caramel Villa	Garden Area	80m <sup>2</sup>	4+1	Garden
2 Bedroom Caramel Villa with Private Pool	Garden Area	65m <sup>2</sup>	4+1	Garden
1 Bedroom Beach Villa	Beachfront, Direct Access to the Sea	60m <sup>2</sup>	2+1 or 3	Sea
2 Bedroom Beach Villa	Beachfront, Direct Access to the Sea	65-85m <sup>2</sup>	4+1	Sea
3 Bedroom Maisonette Beach Villa	Beachfront, Direct Access to the Sea	110m <sup>2</sup>	6+2	Sea
3 Bedroom Luxury Villa	Garden Area	125m <sup>2</sup>	6+1	Garden
3 Bedroom Luxury Villa with Direct Access to the Beach	Beachfront, Direct access to Sea	105m <sup>2</sup>	6+2	Sea
3 Bedroom Villa Seafront	Beachfront, Direct access to Sea	165m <sup>2</sup>	6+1	Sea
4 Bedroom Villa on the Beach with Private Outdoor Hydromassage Bathtub	Beachfront, Direct access to Sea	165m <sup>2</sup>	8+1	Sea

ACCOMMODATION LAYOUTS & PHOTOS ARE SAMPLES AND MAY VARY DEPENDING ON THE POSITION WITHIN THE HOTEL. MEASUREMENTS ARE APPROXIMATE TO THE NEAREST m<sup>2</sup>

View more details & photos about facilities, services & room details online at [caramel.grecotel.com](https://caramel.grecotel.com)



## JUNIOR SUITE SEA VIEW

**Location:** Main House, 2nd floor, prime elevated location

**View:** Sea View

**Size:** 35 sq.m.

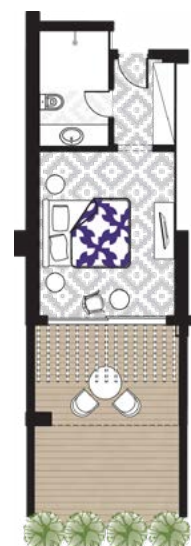
**Layout:** Open plan

**Sleeps:** 2 adults

**Beds:** One King size bed

**Bath:** Marble bathroom with one washbasin and walk-in shower

**Specials:** Covered Balcony & Sun Terrace.



## CARAMEL JUNIOR SUITE

**Location:** Main House. Atrium Wing, 1st & 2nd floor

**View:** Garden/Pool View

**Size:** Indoor: 40 sq.m., outdoor: 6-9 sq.m.

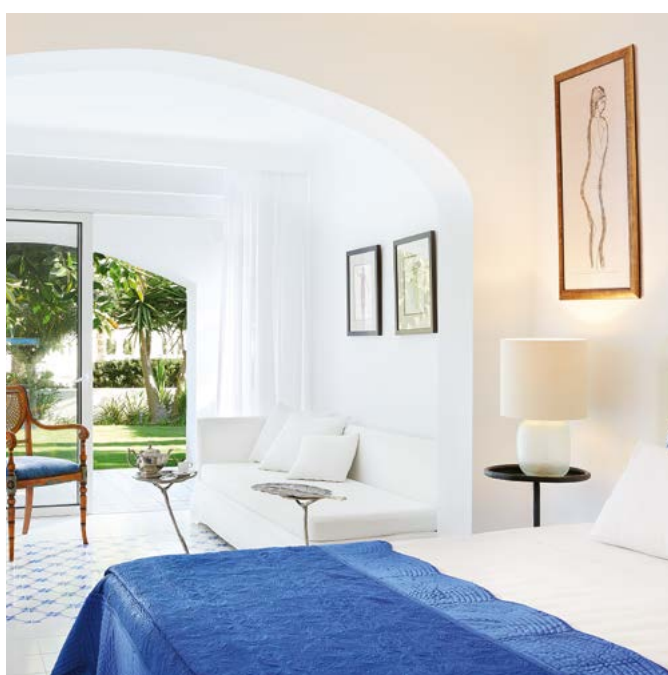
**Layout:** Open plan

**Sleeps:** 2 adults

**Beds:** One King size bed

**Bath:** Spacious sun-filled designer marble bathroom with two washbasins and walk-in shower

**Specials:** Ample wardrobes. Large-sized balcony in selected suites.



## OPEN PLAN JUNIOR SUITE PRIVATE GARDEN

**Location:** Main House. Ground floor

**View:** Garden View

**Size:** Indoor: 40 sq.m., outdoor: 7 sq.m.

**Layout:** Open plan

**Sleeps:** 2 adults + 1 child

**Beds:** One King size bed & one extra single bed

**Bath:** Marble bathroom with one washbasin and walk-in shower

**Specials:** Private garden. A few steps away from the pool.







## FAMILY SUITE MAIN HOUSE

**Location:** Main House, Atrium Wing, 1<sup>st</sup> & 2<sup>nd</sup> floor

**View:** Garden & Parking View

**Size:** Indoor: 50 sq.m., outdoor: 13-17 sq.m.

**Layout:** Two separate sleeping areas divided by sliding doors

**Sleeps:** 2 adults + 2 children

**Beds:** One King size bed & two extra single beds/sofa beds

**Bath:** One marble bathroom with one washbasin and walk-in shower and additional separate WC

**Specials:** Large balcony. Two marble bathrooms in selected suites.



## OPEN PLAN BUNGALOW SUITE

**Location:** Garden Area, Ground & 1st floor

**View:** Garden View

**Size:** Indoor: 50 sq.m., outdoor: 3-9 sq.m.

**Layout:** Open plan

**Sleeps:** 2 adults + 1 child

**Beds:** One King size bed & one extra single bed

**Bath:** Marble spa-inspired bathroom with one washbasin and walk-in shower

**Specials:** Ample Wardrobe



## OPEN PLAN BUNGALOW SUITE WITH PRIVATE OUTDOOR HYDROMASSAGE BATHTUB

**Location:** Garden Area, 1st floor

**View:** Garden View

**Size:** Indoor: 50 sq.m., outdoor: 3-9 sq.m.

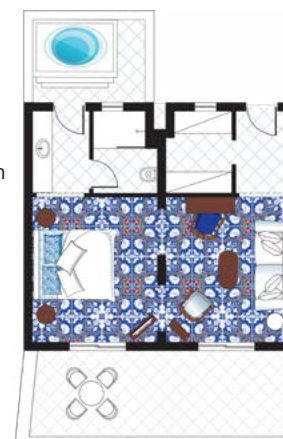
**Layout:** Open plan

**Sleeps:** 2 adults + 1 child

**Beds:** One King size bed & one extra single bed

**Bath:** Marble spa-inspired bathroom with one washbasin and walk-in shower

**Specials:** Open air Hydromassage bathtub. Ample wardrobe.





## LUXURY BUNGALOW SUITE GARDEN VIEW

**Location:** Garden Area. Ground & 1st floor

**View:** Garden View

**Size:** Indoor: 55 sq.m., outdoor: 3-9 sq.m.

**Layout:** Two-room Suite with sliding doors.

**Sleeps:** 2 adults + 2 children

**Beds:** One King size bed & two sofa beds/ single beds

**Bath:** Marble spa-inspired bathroom with one/two washbasins and walk-in shower

**Specials:** Handmade floor tiles. Bathroom access from each room in selected suites. Ample wardrobes.



## CARAMEL LUXURY SUITE WITH PRIVATE OUTDOOR HYDROMASSAGE BATHTUB

**Location:** Main House. 2nd floor

**View:** Sea View

**Size:** Indoor: 50 sq.m., outdoor: 20 sq.m.

**Layout:** Open plan

**Sleeps:** 2 adults

**Beds:** One King size bed

**Bath:** Marble bathroom with one washbasin and walk-in shower

**Specials:** Open air Hydromassage bathtub. Unique suite with exclusive design. Large private terrace. Ample wardrobe.



## MAISONETTE GARDEN VIEW

**Location:** Garden Area. Ground floor **View:** Garden View **Size:**

Indoor: 45 sq.m., outdoor: 6-9 sq.m. **Layout:** Split level. Open plan

**Sleeps:** 2 adults + 1 child **Beds:** One King

size bed & one sofa bed/single bed **Bath:**

Marble spa-inspired bathroom with one washbasin and walk-in shower **Specials:**

Wooden staircase



## MAISONETTE 1ST ROW SEA VIEW

**Location:** Beachfront, 1st Row. Ground

floor **View:** Sea View **Size:** Indoor: 45

sq.m., outdoor: 6-9 sq.m. **Layout:** Split

level. Open plan **Sleeps:** 2 adults + 1 child

**Beds:** One King size bed & one sofa bed/

single bed **Bath:** Marble spa-inspired

bathroom with one washbasin and walk-

in shower **Specials:** Privileged location.

Sunbeds & umbrella in front of the

Maisonette. Wooden staircase.





## LUXURY BUNGALOW SUITE

WITH PRIVATE OUTDOOR  
HYDROMASSAGE BATHTUB

**Location:** Garden Area. 1st floor

**View:** Garden View

**Size:** Indoor: 55 sq.m., outdoor: 3-9 sq.m.

**Layout:** Two-room Suite with sliding doors.

**Sleeps:** 2 adults + 2 children

**Beds:** One King size bed & two sofa beds/single beds

**Bath:** Marble spa-inspired bathroom with one /two washbasins and walk-in shower

**Specials:** Outdoor open-air hydromassage bathtub. Handmade floor tiles. Bathroom access from each room in selected suites. Ample wardrobes.



## 2 BEDROOM CARAMEL VILLA

**Location:** Garden Area **View:** Garden View

**Size:** Indoor: 80 sq.m., outdoor: 4-10 sq.m.

**Layout:** Split or one level layout. Two Master Bedroom suites.

**Sleeps:** 4 adults + 1 child

**Beds:** One double Simmons Master king size bed, one king size bed & one optional extra single bed

**Bath:** One or Two marble spa-inspired bathrooms, with one/two washbasins and walk-in shower

**Specials:** Top floor Private open air hydromassage bathtub in selected villas. Private gazebo on the beach. Hand-made floor tiles.





## 2 BEDROOM BEACH VILLA

**Location:** Beachfront, Direct Access to the Sea

**View:** Sea View

**Size:** Indoor: 65-85 sq.m., outdoor: 4-10 sq.m.

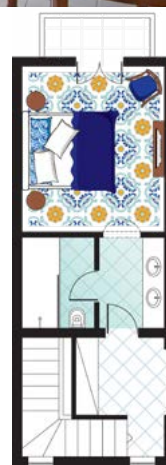
**Layout:** Split-level layout. Two Master Bedroom suites. Open Plan ground floor.

**Sleeps:** 4 adults + 1 child

**Beds:** One King size bed, One double Simmons Master king size bed & one optional extra single bed.

**Bath:** Two marble spa-inspired bathrooms with one/two washbasins and walk-in shower

**Specials:** Private gazebo in front of the villa. Direct access to the beach. Hand-made floor tiles. Ample wardrobes. Sliding doors on the ground floor in selected villas.



## 2 BEDROOM CARAMEL VILLA

WITH PRIVATE POOL

**Location:** Garden Area

**View:** Garden View

**Size:** Indoor: 65 sq.m., outdoor: 19-25 sq.m.

**Layout:** One Master Bedroom Suite & en-suite living area. One double bedroom.

**Sleeps:** 4 adults + 2 children

**Beds:** One double Simmons Master king size bed, one king size bed & two optional extra single beds.

**Bath:** Two marble spa-inspired bathrooms, both with one washbasin and walk-in shower.

**Pool:** Private swimming pool 15m<sup>2</sup>

**Specials:** Private gazebo on the beach. Hand-made floor tiles. Two entrances.







### 3 BEDROOM MAISONETTE BEACH VILLA

**Location:** Beachfront, Direct Access to the Sea

**View:** Sea View

**Size:** Indoor: 110 sq.m., outdoor: 4-10 sq.m.

**Layout:** Split-level. Two Master Bedroom Suites. One double bedroom & en-suite living area

**Sleeps:** 6 adults + 2 children

**Beds:** One king size bed, One double Simmons Master king size bed & two optional extra single beds

**Bath:** Three marble spa-inspired bathrooms, each with one washbasin and walk-in shower

**Specials:** Private Gazebo on the beach



### 3 BEDROOM LUXURY VILLA

**Location:** Garden Area

**View:** Garden View

**Size:** Indoor: 125 sq.m., outdoor: 20-30 sq.m.

**Layout:** Split-level layout. Two Master Bedroom Suites. One double bedroom. Separate Living Area

**Sleeps:** 6 adults + 1 child

**Beds:** Two King size beds, one double Simmons Master king size bed & one optional extra single bed

**Bath:** Two marble spa-inspired bathrooms with one/two washbasins and walk-in shower

**Specials:** Top floor open air hydromassage bathtub. Private gazebo on the beach. Hand-made floor tiles.







### 3 BEDROOM LUXURY VILLA WITH DIRECT ACCESS TO THE BEACH

**Location:** Beachfront, Direct Access to the Beach

**View:** Sea View

**Size:** Indoor: 105 sq.m., outdoor: 4-10 sq.m.

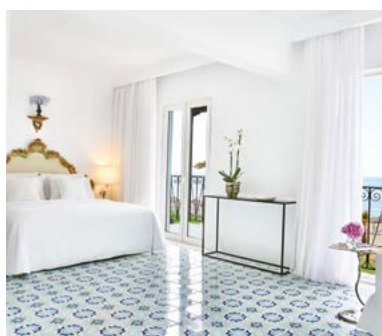
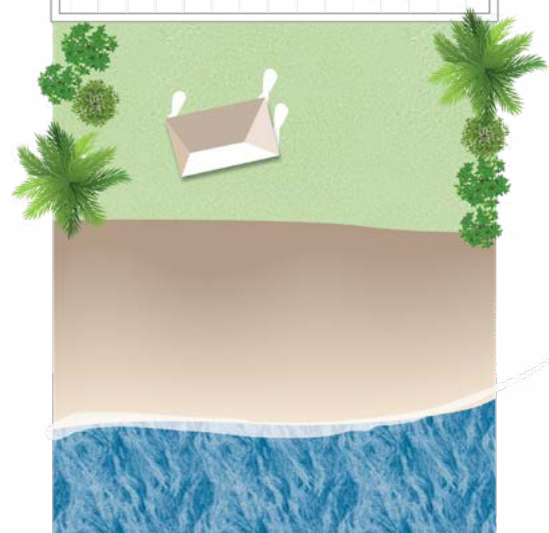
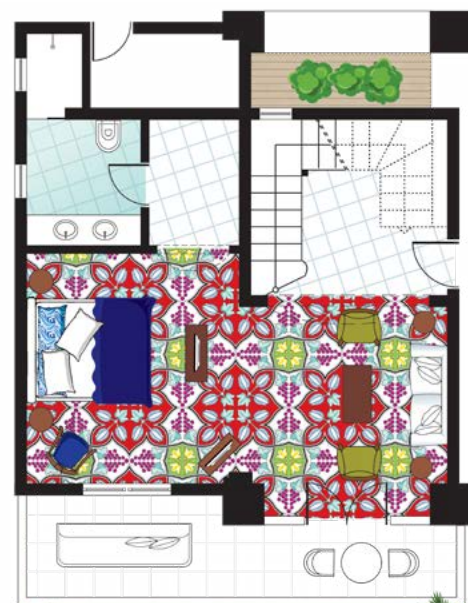
**Layout:** Split-level layout. Two Master Bedroom suites. One double bedroom & en-suite living area

**Sleeps:** 6 adults +2 children

**Beds:** Three King size beds & two optional extra single beds

**Bath:** Two marble spa-inspired bathrooms with two washbasins and walk-in shower. Separate WC.

**Specials:** Direct access to the beach. Private gazebo on the beach. Hand-made floor tiles.







### 3 BEDROOM VILLA SEAFRONT

**Location:** Beachfront, Direct Access to the Sea

**View:** Sea View

**Size:** Indoor: 165 sq.m., outdoor: 8-16 sq.m.

**Layout:** Split-level layout. Three Luxurious Double Bedrooms. Separate living area. Connecting door.

**Sleeps:** 6 adults + 1 children

**Beds:** Three King size beds & one optional extra single bed.

**Bath:** Two marble spa-inspired bathrooms on the upper floor, both with one/two washbasins and walk-in shower

**Specials:** Private gazebo in front of the villas. Hand-made floor tiles.







## 4 BEDROOM VILLA ON THE BEACH WITH OUTDOOR HYDROMASSAGE BATHTUB

**Location:** Beachfront, Direct Access to the Sea

**View:** Sea View

**Size:** Indoor: 165 sq.m., outdoor: 8-16 sq.m.

**Layout:** Split-level layout. One Master Bedroom Suite with en suite living area. Three Luxurious Double Bedrooms. One separate living area. Connecting door.

**Sleeps:** 8 adults + 1 children

**Beds:** Three King size beds, one double Simmons Master King size bed & one optional extra single bed.

**Bath:** Ground floor: marble spa-inspired bathroom with one washbasin and walk-in shower. Upper floor: two marble spa-inspired bathrooms both with two washbasins and walk-in shower

**Specials:** Top floor open air hydro-massage bathtub. Private gazebo in front of the villa. Hand-made floor tiles.

