



A REAL RESORT CLASSIC





CRETA PALACE

GRECOTEL LUXURY BEACH RESORT



**CRETA PALACE LOOKS UPON THE GLORIOUS CRETA SEA AND RETHYMNO
OLD TOWN SILHOUETTE 1,5 KM AWAY.**

A miniature Cretan village square, a church, a traditional kafenion, a monastery souvenir shop and retro retail make up for a unique atmosphere in Grecotel's Birthplace. Cuisine is original and in a class of its own. Above all, Creta Palace is a kids and activities paradise.



CRETA PALACE

GRECOTEL LUXURY BEACH RESORT



IDEAL FOR

All ages • Families

NEWS 2024

- **New** Panoramic Guestroom Sea View • **New** Grand Family Room, Sea View • **New** Palace Family Bungalow Suite, Garden View • **New** Bungalow Suite Sea Front, Private Pool • **New** Creta Palace 8 Bedroom Mansion
- **New** Complimentary Full Set Bar Concept in villas

LOCATION

On the beach, on the Cretan Riviera • Rethymno town: 4km • Heraklion Airport: 79km • Chania Airport: 70km

ACCOMMODATION

Total Rooms 335 • Rooms 153 • Bungalows 182

BEACH & POOLS

- On a 300m long sandy and Blue Flag awarded beach • 1 Fresh water Main Pool • 1 Children's Fresh water Pool with 2 Water Slides • 1 Indoor Fresh water Pool

FEATURES

- 10 restaurants & bars • 2.000m² Elixir Beauty Spa with Indoor Pool • Grecoland Kids Club • Kids Summer Camp Activities during high season • Indoor & Outdoor Conference & Events facilities for up to 250 people • King Minos Garden Theatre • Orthodox Greek Chapel • Amalthea's bostani garden

AWARDS

- Travelife Gold 10/2022 to 10/2024 for Sustainability in tourism • TUI Environment Champion 2019 • TUI Top Quality 2019 • TUI Family Champion 2019 • TRAVELIFE GOLD for Sustainability in tourism • Blue Flag • 2023 TripAdvisor Certificate of Excellence • Green & Fair Hotel 2023 by TUI

MEAL PLANS

Breakfast

A stunning variety of choices, ranging from the lavishness of American-style buffet to the elegance of exclusive à la carte options with local delicacies. Early & Late breakfast as well as In-room breakfast services are available upon request.

Halfboard

A well-tended half board concept offering a large variety of dishes and tastes in lavish breakfast and dinner buffets at Labyrinth Atrium main restaurant, or choice of à la carte restaurants with credit allowance of 20€ per adult & 10€ per child (reservation required).

Comfort All-In Pack

For an absolute carefree holiday experience, upgrade to "Comfort All-In package". In addition to the dinner offered in your Halfboard you will enjoy lunch, selected drinks & beverages, snacks throughout the day, as well as an a la carte dinner once per 7 nights' stay.

RESTAURANTS & BARS

BREAKFAST

Labyrinth

Atrium Main Restaurant, Int. Cuisine.

American Breakfast Buffet with fitness food, show cooking & Cretan corner with traditional products and local herb teas.

LUNCH

Labyrinth

Atrium Main Restaurant, Int. Cuisine.

Extensive Mediterranean buffet with Cretan corner with traditional products.

Tasty Corner

Free Kids Dining.

Baby food order - prepared on request.

Princess Ariadne

À La Carte Pool Brasserie, Greek & Int. Cuisine.

Snacks, sandwiches, fresh salads served all day long. Special menu for children.

DINNER

Labyrinth

Atrium Main Restaurant, Int. Cuisine.

14 different buffet theme evenings with show-cooking. Free of charge for guests in half board.

Barbarossa

Restaurant de Maison.

Legendary recipes created with pride & technique by our wonderful cuisine staff throughout Grecotel history!

Golden Dragon Steak & Sushi à La Carte Restaurant.

A Fun Menu combining great Asian cuisine with the best steak option in Crete.

Zeus + Amalthea Sky Bar à La Carte Restaurant.

On the hotel's rooftop with breathtaking views to the Cretan Sea (mid. May - mid. October).

In all restaurants Vegan/Vegetarian/Gluten Free options, as well as Vegan and BIO wines in all restaurants.

Agreco Farms Cretan Farm & à La Carte Taverna.

4,5 km from the hotel a dining à la carte option, a set menu with Cretan dishes, based on the farm's organic produce. Transfer & Tour Included.

NOTE: Half board includes breakfast and dinner in the hotel's main restaurant. Half Board guests who wish to dine à la carte instead of taking

their pension meal will be given a price reduction of 20 € per adult & 10 € per child on their food bill. Comfort Pack ends at 5 p.m. on the departure day.

Culinary Experiences

- Amalthia's Breakfast (Cretan)
- Sunrise Yoga + Detox Breakfast
- Luxury Picnic
- Exploring the Cretan Vineyard. Wine Tasting
- Fusion Breakfast
- Macaroon Master Class
- Cooking Lessons Kids – Adults
- Olive Oil Tasting
- Local Herbs Tasting. Make your Sarandadendri

BARS

Talos Lounge Bar

Stylish bar with contemporary atmosphere extends onto a spacious veranda overlooking the pools and garden.

Princess Ariadne Pool Bar

Drinks or a light meal on the poolside overlooking the sea.

Zeus + Amalthia Sky Bar Designer cocktails right on the hotel's rooftop.

Kafenion "The Beautiful Hellas" Authentic Greek coffee house

A uniquely rewarding experience with a selection of Ouzo, Raki and other local drinks to accompany the local 'mezze'.

Caretta caretta Beach bar Directly on the beach it offers light snacks and refreshing drinks (weather permitted).

ROOM SERVICE 07:00 - 02:00 at extra charge.

KIDS

Kids Go Free Children up to 12 years old enjoy free kids dining in the "Tasty Corner", free Grecoland kids' programme, GrecoTeens and outdoor creative activities.

Greco baby 0-3 yrs. Pre-arrival order of baby equipment.

- Baby-sitting, extra charge

Grecoland Kids Club, 4-12 yrs. 6 times per week (10.00-18.00). Children under 4 yrs. must be supervised at all times by a parent or guardian.

Discovery Adventures, 7-14 yrs. High season - 2 times per week (programme may vary due to weather & number of participants)

Greco teens 13+ yrs. From mid-June till mid-September, group sports and entertainment activities

Free Kids Dining, 4-12 yrs. • All Day favorite snacks at Grecoland (11:00 -17:00) • Tasty corner lunch at the Main Restaurant (12.30-14.00)

- A La Carte kids' dining in designated restaurants with special kid's menu including juices & refreshments or credit allowance for regular menu orders.

SPA & WELLNESS

2.000m² Elixir Beauty Spa with indoor pool

Spa Facilities: • 55m² Indoor Pool Whirlpool with hydromassage and water cannon • Open-air Atrium with Relaxation Loggia with external hydromassage • Hydromassage bathtub • Sauna • Fitness room with Technogym cardio fitness equipment • 3 Single & 2 Double Private Massage Rooms • Gazebo Open-air Massage • Beauty Salon • Changing Rooms

Gym: Fitness room with Technogym cardio fitness equipment including: 1 xcardia wave, 2 x fitness bike, 1 x leg extension, 2 x abductor, 1 x chestpress, 3 x treadmill, 1 x weight assisted chin up/ dip, 1 x selection upperbody lat machine, 2 x multifunction flat bench, Outdoor Fitness, Reservation Required, reservation for families (Flexible timetable upon request), aqua gyms, Land sports, Personalized Private Fitness Training (Reservation Required). Outdoor Gym overlooking the Cretan Sea and shaded by the tamarisk trees.

FITNESS & ACTIVITIES

Gymnastics

Morning gym & Aqua Gym, Aerobics & Aqua Aerobics, Yoga, Aerial

Yoga, Pilates & Hiking, TRX Training, Trekking, Jogging, private fitness, outdoor fitness

Sports & Fun

Beach Volley, Table Tennis, 2 Tennis Courts, Boccia, Climbing wall

Extra Charge: Tennis: floodlit, coaching available, Watersports on the beach: Water-Ski, Jet ski, Wet Bikes, Scuba Diving, Parasailing, Yachting & Sea Activities

Outside The Hotel

Extra charge: Golf: Crete Golf Club (89km), Mountain Bike Center: Training Camp, Bike Tours, Bike Rental, Horse Riding (2 km), Soccer 5X5 (100 m), Scuba Diving

Evening Entertainment

- Cretan and Greek festivals • Live Music Performances • Dance Parties
 - Professional External Entertainment Shows With Extra Charge:
- Atelier: Silk, T-shirt, glass & wood painting

MEETING FACILITIES

Indoor & outdoor conference & events facilities for up to 250 pax.

ENVIRONMENTAL POLICY

Travelife Gold Award 2018 • TUI Environment Champion 2019 • Protecting the endangered sea turtles Caretta-Caretta and Sea Daffodil (Pancratium maritimum) • Beach awarded with the European Blue Flag • Use of organic products/produce • Solar Energy to heat water • Waste Recycling.

SERVICES

WiFi Free, in all hotel areas and guest rooms.

New GrecoTel Mobile App proposes a world of information regarding your stay, online-reservation at the à la carte restaurants and services in and out of the hotel.

24h WhatsApp Concierge Designated staff members are at call on WhatsApp, to assist guests on everything they may desire.

Multilingual personnel English, German, Russian, French, Dutch, Italian, Greek

Medical Services 24hr Medical cover, Doctor on call -extra charges may apply depending on guests' travel insurance • Pharmacy at 2km • Hospital at 4km

Transport Car Rental Desk in Hotel • Motor Bike Rental from reception • Bus stop 150m

Taxi Service on request to Rethymno (4km) • to Heraklion (75km) • to Heraklion Airport (79km) • to Chania (69km) • to Chania Airport (70km) • to Ag. Nikolaos (135km) • to Elounda (135km).

Shopping • Charisma Jewellery Boutique • "Fifty-Fifty" Boutique • "SunStores" Market/Souvenir Shop • Agreco Farm Shop • GrecoKids Shop • Culture center "Doron Society" (Icons & Embroideries from the nearby Monastery Ag. Irini) • Cosmetic shop at Elixir Beauty Spa

Other • Business Center / Terraces/ Lounge • "King Minos" Garden Theatre • Orthodox Greek Chapel • Hair Salon • Amalthea's bostani garden

Money All major Credit Cards are accepted • ATM in the hotel • Nearest Bank at 4 km

Voltage Current 220V.

Mobility Impaired Guests Mobility impaired guests friendly. There are ramps throughout the hotel. All departments are accessible to guests in wheelchairs. Ramp section next to most of the steps in the hotel. No specially adapted rooms for the mobility impaired guests.

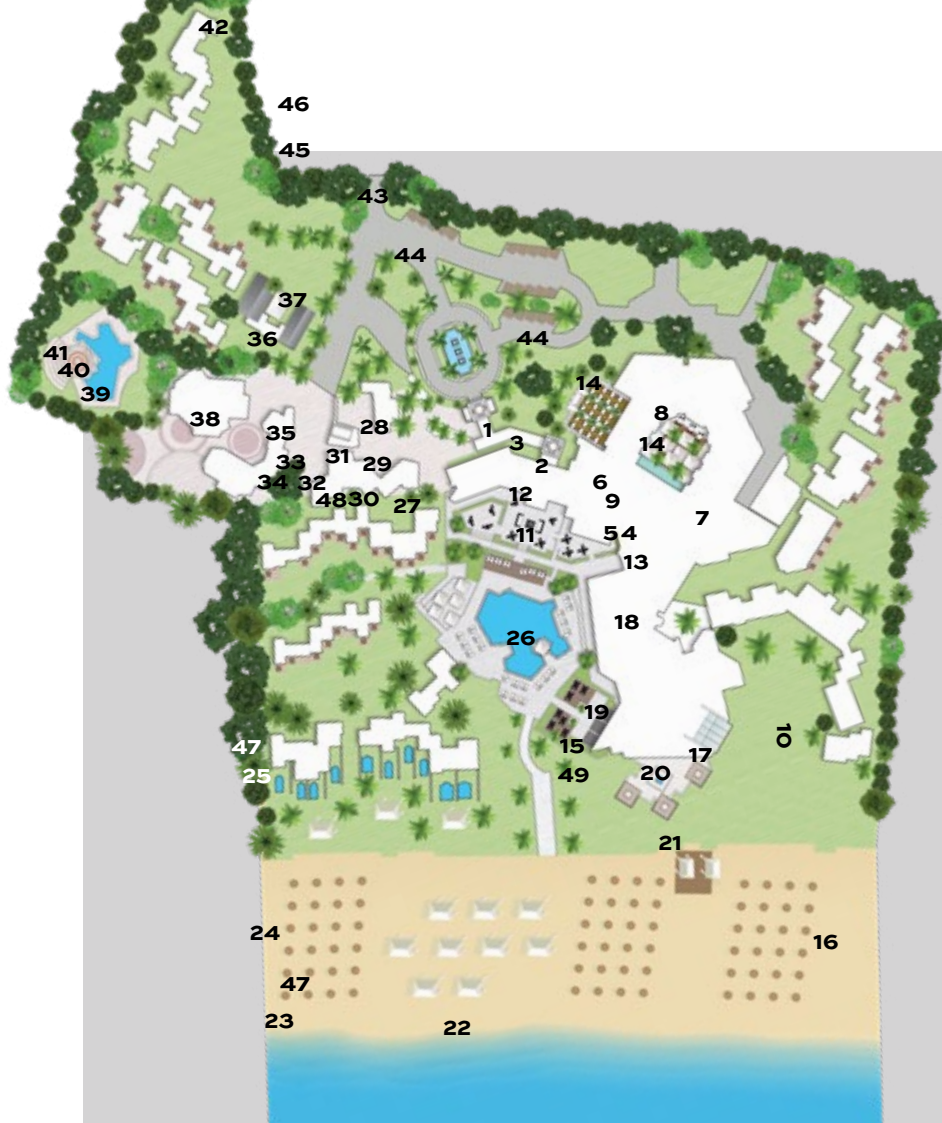
Animals Dogs that weigh up to 8kg are allowed in selected villas & bungalows with private gardens. Restrictions apply. Service animals are allowed to accompany their handler in all hotel premises. View pets policy at grecotel.com/pets-policy.

Official Hotel Categorization Five star Resort

Contact details

GR-741 00 Rethymnon, Crete

TEL.: (+30) 28310 55181 E-mail: reservations.cp@grecotel.com



CRETA PALACE HOTEL MAP

1. Entrance
2. Reception
3. Guest Services Office
4. Charisma Jewellery Shop
5. Lobby Lounges
6. Talos Lounge Bar
7. Labyrinth Atrium Restaurant
8. Tasty Corner
9. Tour Operators Desks - Hotel Car Rental
10. Fitness area
11. Sky Bar - Restaurant "Zeus + Amalthia"
12. Library
13. ATM
14. Labyrinth Atrium Restaurant, Outdoors
15. Princess Ariadne Brasserie
16. Beach volley
17. Indoor Pool (Fresh Water)
18. Elixir Beauty Spa
19. Golden Dragon Steak & Sushi Restaurant
20. Barbarossa à la carte Restaurant de Maison
21. Caretta-Caretta Beach Bar
22. Beach
23. Watersport Center
24. Atelier
25. Boccia Fields
26. Main Swimming Pool (Fresh Water)
27. Doron Society
28. Entertainment Office
29. Fifty-Fifty Boutiques
30. Sunstores Holiday Boutiques
31. Orthodox Greek Chapel
32. Kafenion The Beautiful Hellas
33. Hairdresser Salon
34. Agreco Farm Shop
35. GrecoKids' Shop
36. Grecoland
37. Children's Playground
38. King Minos garden theatre
39. Kid's Pool with slides (Fresh Water)
40. Grecoteens
41. Climbing wall
42. Tennis Courts
43. Hotel Main Gate
44. Parking
45. Bus Stop to Rethymnon
46. Bus Stop to Heraklion
47. Beach Volley
48. Eco Corner

ACCOMMODATION CHART

All room types include:

- Room Service 07.00-02.00 (extra charge)
- Complimentary tea & coffee facilities
- Nespresso machine with 2 complimentary pods per adult/per day
- Mini-bar with international brands
- In room Safe
- Laundry Services (extra charge)
- Complimentary WiFi
- LCD TV
- 24/7 Support via What's App
- Pillow Menu
- Bathrobes & Slippers
- Hairdryer
- Deluxe Bathroom Amenities
- Resort beach bag with towels & beach accessories

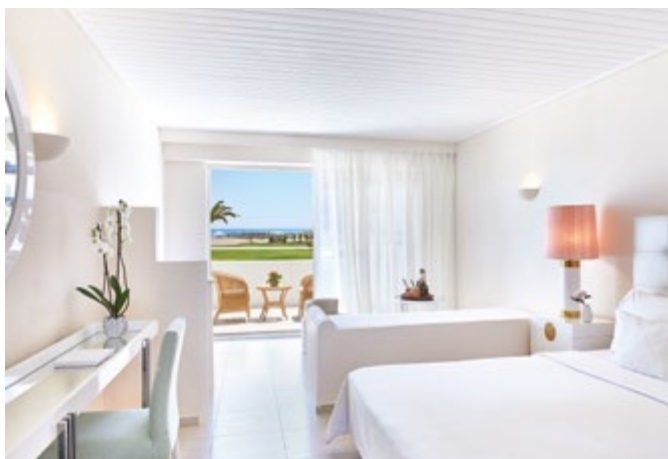
Special Services & Amenities for Homes & Villas:

- Full Set Bar Concept
- Private butler (additional charge when not included in room price)

ACCOMMODATION LAYOUTS & PHOTOS ARE SAMPLES AND MAY VARY DEPENDING ON THE POSITION WITHIN THE HOTEL. MEASUREMENTS ARE APPROXIMATE TO THE NEAREST m²

View more details & photos about facilities, services & room details online at cretapalace.com

ROOM TYPES	LOCATION	SIZE	SLEEPS	VIEW
Double Room Single Use	Main Building or Garden Area	28 m ²	1	Garden
Bungalow	Garden Area	33 m ²	2+1 or 3	Sea, Side Sea or Garden
Double Room	Main Building	28 m ²	2+1 or 3	Sea
NEW Panoramic Guestroom Sea View	Main Building	28 m ²	2	Sea
Family Bungalow	Garden Area	45 m ²	2+2	Garden
Superior Family Bungalow	Garden Area	45-52 m ²	3+2	Garden
Maisonette	Garden Area	56 m ²	2+2	Garden
Deluxe Family Bungalow, Garden View with Balcony	Garden Area	53-60 m ²	3+2	Garden
FAMOUS CLASS ACCOMMODATION				
Junior Bungalow Suite Seafront	Beachfront	35 m ²	2+1	Direct Sea View
NEW Grand Family Room, Sea View	Main building	56 m ²	6	Sea
Deluxe Family Bungalow Ground Floor	Garden Area	53-60 m ²	3+2	Garden
Family Suite, Sea View, Main Building	Main Building	50 m ²	3+2	Sea
Palace Junior Suite, Panoramic Sea View	Main Building	45 m ²	2	Panoramic Sea
NEW Palace Family Bungalow Suite, Garden View	Garden Area	66 m ²	3+2	Garden
Palace Family Bungalow Suite Side Sea View	Garden Area	66 m ²	4+2	Side Sea
Family Suite Sea Front	Beachfront	42-48 m ²	2+2	Direct Sea
Junior Suite Sea Front, Private Pool	Beachfront	40 m ²	2+1	Direct Sea
2-bedroom Luxury Bungalow Suite	Beachfront	70 m ²	4+2	Direct Sea
Palace Luxury Suite, Panoramic Sea View	Main Building	86 m ²	2+2	Panoramic Sea
NEW Bungalow Suite Sea Front, Private Pool	Garden Area	46-50m ²	3	Direct Sea
Family Bungalow Suite Sea Front, Private Pool	Beachfront	46-50 m ²	2+2 or 3+1	Direct Sea
Presidential Villa, Sea View, Private Pool	Beachfront	164 m ²	4	Direct Sea
NEW Creta Palace 8 Bedroom Mansion	Villas area	350m ²	16+10	Panoramic Sea



BUNGALOW

SEA, SIDE SEA OR GARDEN VIEW

Location: Garden Area, Ground/1st floor

View: Sea, Side Sea or Garden View

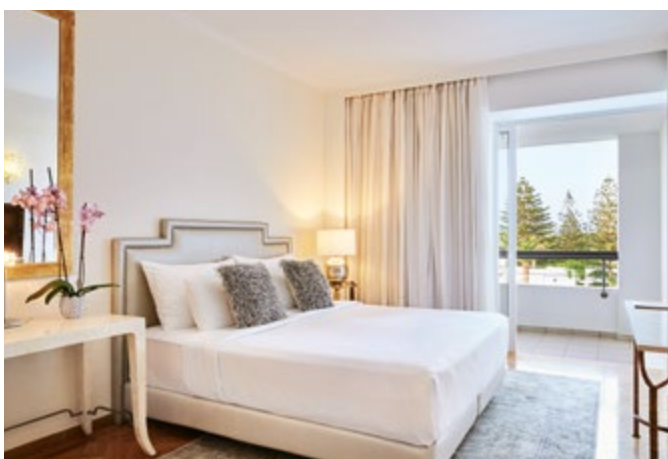
Size: Indoor: 33 sq.m., outdoor: 9 sq.m.

Layout: Open plan

Sleeps: 2 adults + 1 child or 3 adults

Beds: Double bed or Twins & 1 single sofa bed

Bath: Bathroom with one washbasin & bathtub or shower



DOUBLE ROOM

SEA VIEW

Location: Main Building, 1st/2nd/3rd floor

View: Sea View

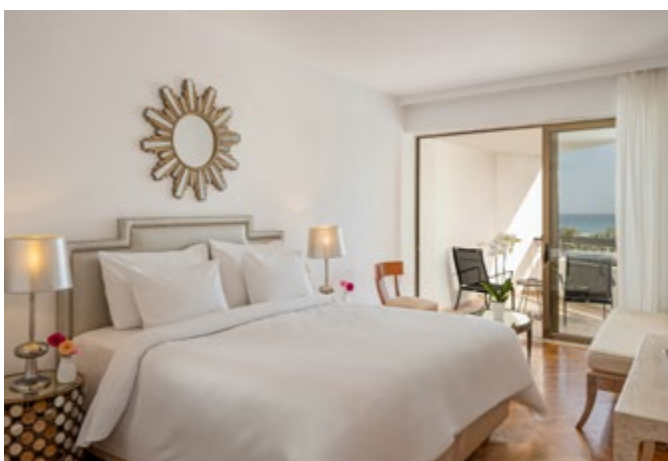
Size: Indoor: 28 sq.m., outdoor: 6 sq.m.

Layout: Open plan

Sleeps: 2 adults + 1 child

Beds: Double bed or Twins & extra single bed (sofa bed)

Bath: Bathroom with one washbasin & bathtub



NEW PANORAMIC GUESTROOM

SEA VIEW

Location: Main building, 1st, 2nd or 3rd floor

View: Sea

Size: 28m², Outdoor: 6m²

Layout: Open plan

Sleeps: 2 adults

Beds: Double bed or Twins

Bath: Bathroom with one washbasin & bathtub



FAMILY BUNGALOW

GARDEN VIEW

Location: Garden Area, Ground floor

View: Garden View

Size: Indoor: 45 sq.m., outdoor: 9 sq.m.

Layout: Two separate sleeping areas with sliding doors (selected rooms)

Sleeps: 2 adults + 2 children

Beds: Double bed & 2 single sofa beds

Bath: Bathroom with two washbasins, bathtub & separate shower cabin





SUPERIOR FAMILY BUNGALOW GARDEN VIEW

Location: Garden Area, Ground/1st floor
View: Garden View
Size: Indoor: 45-50 sq.m., outdoor: 9 sq.m.
Layout: Separate Rooms
Sleeps: 3 adults + 2 children
Beds: 1 Double bed, 2 single sofa beds & 1 extra single bed (upon request)
Bath: Bathroom with one washbasin & bathtub



Sample Floorplan



MAISONETTE GARDEN VIEW

Location: Garden area, Ground & 1st floor
View: Garden View
Size: Indoor: 56 sq.m., outdoor: 9 sq.m.
Layout: Split level
Sleeps: 2 adults + 2 children
Beds: 1 Double bed & 2 bunk beds
Baths: 2 bathrooms: 1st with one washbasin & bathtub, 2nd with one washbasin & shower



Upper floor



Ground floor

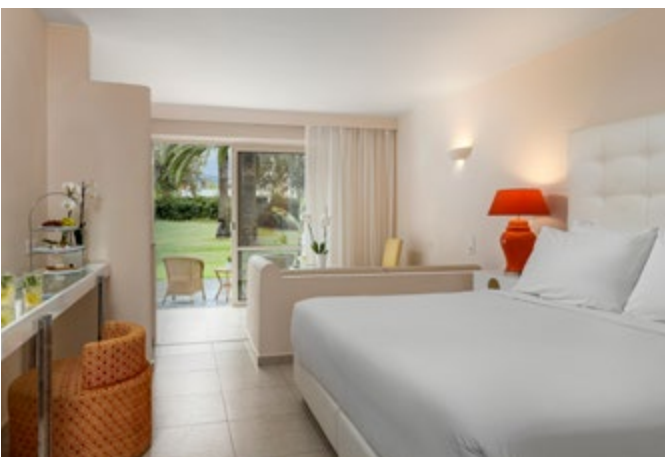


DELUXE FAMILY BUNGALOW GARDEN VIEW WITH BALCONY

Location: Garden Area, 1st floor
View: Garden View
Size: Indoor: 53-60 sq.m., outdoor: 9 sq.m.
Layout: Separate Rooms
Sleeps: 3 adults + 2 children
Beds: 1 Double bed, 2 single sofa beds & 1 extra single bed (upon request)
Bath: 2 bathrooms: 1st with one washbasin & bathtub, 2nd with one washbasin & shower



Sample Floorplan



DELUXE FAMILY BUNGALOW GROUND FLOOR

Location: Garden Area, Ground floor
View: Garden View
Size: Indoor: 53-60 sq.m., outdoor: 9-15 sq.m.
Layout: Separate Rooms
Sleeps: 3 adults + 2 children
Beds: 1 Double bed, 2 single sofa beds & 1 extra single bed (upon request)
Bath: 2 bathrooms: 1st with one washbasin & bathtub, 2nd with one washbasin & shower



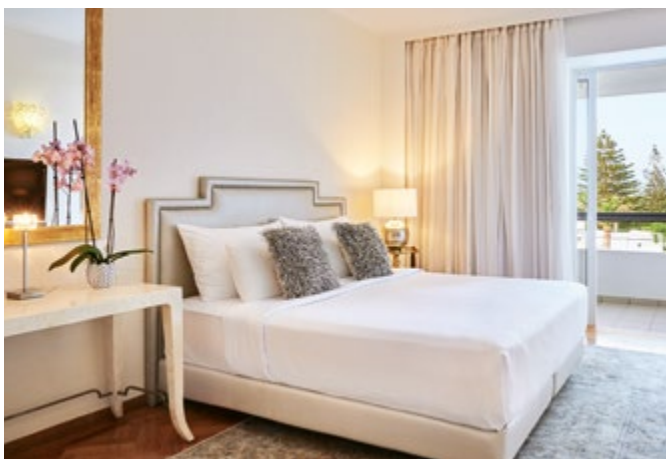
Sample Floorplan



Famous Class

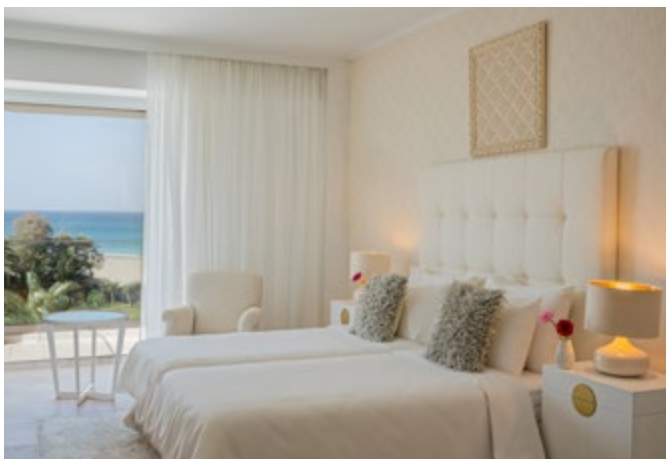
JUNIOR BUNGALOW SUITE
SEAFRONT

Location: Beachfront, Ground/1st floor
View: Direct Sea View
Size: Indoor: 35 sq.m. outdoor: 9 sq.m.
Layout: Open plan
Sleeps: 2 adults + 1 child
Beds: 1 King size bed & 1 single sofa bed
Bath: Marble bathroom with 1 washbasin & 1 walk-in shower



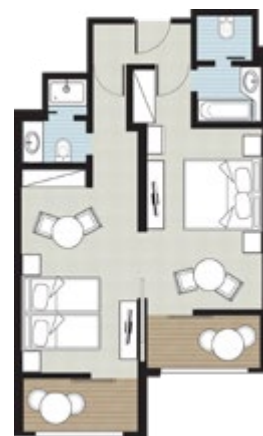
NEW GRAND FAMILY ROOM
SEA VIEW

Location: Main building, 1st, 2nd or 3rd floor
View: Sea
Size: 56m², Outdoor: 6m² each balcony
Layout: Separate rooms with connecting door
Sleeps: 6 adults
Beds: 2 Double beds or 2 Twins & 2 extra single beds (sofa bed)
Bath: 2 Bathrooms with one washbasin & bathtub



FAMILY SUITE
SEA VIEW MAIN BUILDING

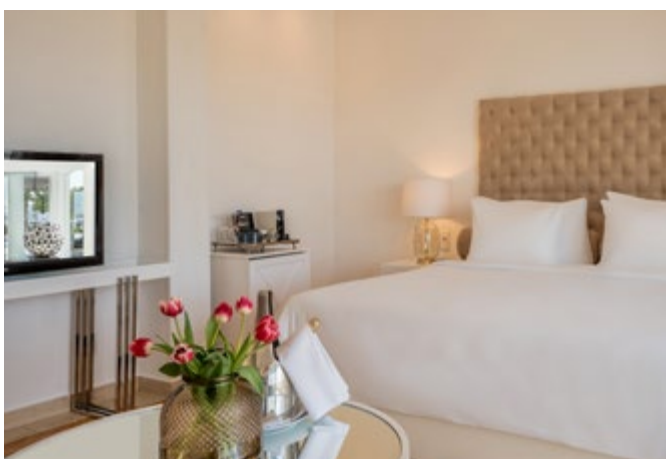
Location: Main Building, 1st/2nd/3rd floor
View: Sea View
Size: Indoor: 50 sq.m., outdoor: 12 sq.m.
Layout: Separate rooms
Sleeps: 3 adults + 2 children
Beds: 2 Double beds & 1 optional extra single bed
Baths: 2 bathrooms: 1st with one washbasin & bathtub, 2nd with one washbasin & shower
Special: The room optionally opens up as one large common space



Famous Class

PALACE JUNIOR SUITE
PANORAMIC SEA VIEW

Location: Main Building, Penthouse
View: Panoramic Sea View
Size: Indoor: 45 sq.m., outdoor: 9 sq.m.
Layout: Open plan
Sleeps: 2 adults
Beds: 1 King size bed
Bath: Marble bathroom with 2 washbasins & 1 bathtub





Famous Class

**NEW PALACE
FAMILY
BUNGALOW
SUITE GARDEN
VIEW**

Location: Garden Area, Ground & 1st floor, **View:** Garden View
Size: 66m², Outdoor: 12m²
Layout: Two separate rooms
Sleeps: 3 adults + 2 children
Beds: Master bedroom: 1 Double bed & 1 sofa bed. Lounge area: 2 single beds or 1 Double bed
Bath: 2 bathrooms with 1 washbasin & 1 walk-in shower each
Special: Furnished patio with sun beds & umbrella



Famous Class

**PALACE FAMILY
BUNGALOW SUITE
SIDE SEA VIEW**

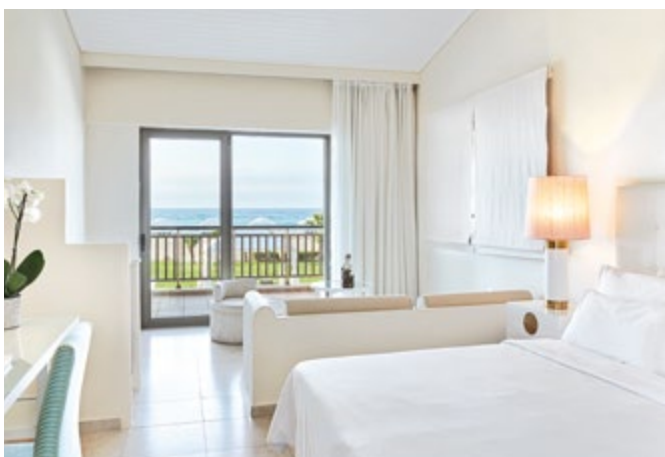
Location: Garden Area, Ground floor
View: Side Sea View
Size: Indoor: 66 sq.m., outdoor: 12 sq.m.
Layout: Two separate rooms
Sleeps: 4 adults + 2 children
Beds: Master bedroom: 1 Double bed & 1 sofa bed. **Lounge area:** 2 single beds & 1 sofa bed. **Bath:** 2 bathrooms with 1 washbasin & 1 walk-in shower each
Special: Furnished patio with sun beds & umbrella



Famous Class

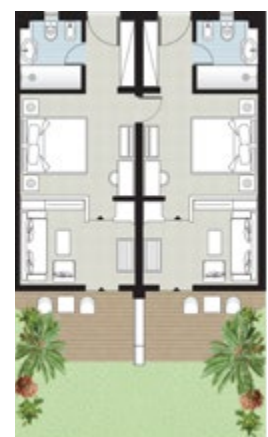
**FAMILY SUITE SEA FRONT
DIRECT SEA VIEW**

Location: Beachfront, 1st floor
View: Direct Sea View
Size: Indoor: 42-48 sq.m., outdoor: up to 18 sq.m.
Layout: Separate Rooms, Master bedroom & Lounge/Dining area
Sleeps: 2 adults + 2 children
Beds: 1 King size bed & 2 single sofa beds
Bath: Bathroom with 2 washbasins, bathtub & separate shower cabin
Special: Shaded porch with outdoor furniture



**2 BEDROOM LUXURY
BUNGALOW SUITE**

Location: Beachfront, Ground/1st floor
View: Direct Sea View
Size: Indoor: 70 sq.m., outdoor: 18 sq.m.
Layout: 2 separate sleeping areas & 2 Lounge areas
Sleeps: 4 adults + 2 children
Beds: 2 King size beds, Lounge area: 2 single sofa beds
Bath: 2 marble bathrooms with 1 washbasin & 1 walk-in shower each

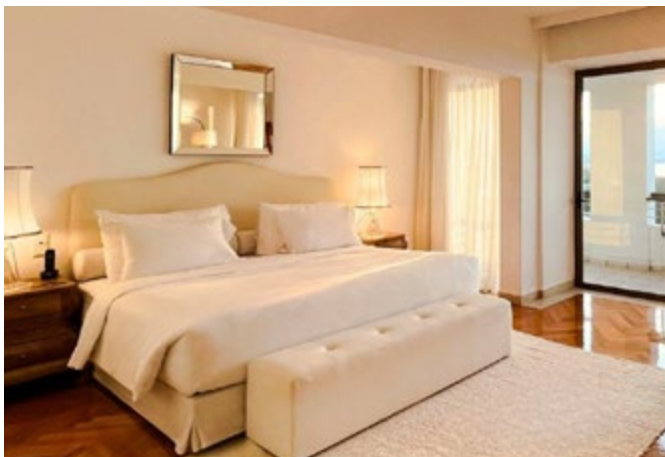




Famous Class

JUNIOR SUITE SEA FRONT PRIVATE POOL

Location: Beachfront
View: Direct Sea View
Size: Indoor: 40 sq.m., outdoor: 25 sq.m.
Layout: Open plan
Sleeps: 2 adults + 1 child
Beds: 1 Double bed & 1 single sofa bed
Bath: Marble bathroom with 1 washbasin & 1 bathtub
Pool: Private swimming pool 12.5m²
Specials: Ample wardrobes. Sun beds and umbrella. Outdoor furniture for dining and lounging. Shaded terrace. Direct access to the beach. Private Gazebo.



Famous Class

PALACE LUXURY SUITE PANORAMIC SEA VIEW

Location: Main Building, Penthouse
View: Panoramic Sea View
Size: Indoor: 86 sq.m., outdoor: 20 sq.m.
Layout: Master Bedroom & Lounge or 2nd sleeping areas separated by sliding door
Sleeps: 2 adults + 2 children
Beds: 1 king size bed & 2 optional extra single beds
Bath: Marble bathroom with two washbasins, bathtub & separate shower cabin



NEW BUNGALOW SUITE SEA FRONT PRIVATE POOL

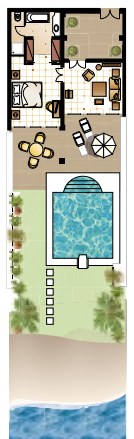
Location: Beachfront, **View:** Direct Sea, **Size:** 46-50m², **Outdoor:** 30m², **Pool:** up to 23m²,
Layout: Separate Rooms, Master bedroom & Lounge area, **Sleeps:** 2 adults + 1 child, **Beds:** 1 King size bed & 1 extra single sofa bed,
Bath: Marble bathroom with one washbasin, hydromassage bathtub & separate shower cabin, **Pool:** Private swimming pool up to 23m², **Special:** Private Gazebo. Cosmetic box. Private entrance courtyard. Sun beds and umbrella. Outdoor furniture for dining and lounging. Direct access to the beach.



Famous Class

FAMILY BUNGALOW SUITE SEA FRONT PRIVATE POOL

Location: Beachfront **View:** Direct Sea View
Size: Indoor: 46-50 sq.m., outdoor: 30 sq.m.
Layout: Separate Rooms, Master bedroom & Lounge area
Sleeps: 2 adults + 2 children or 3 adults + 1 child
Beds: 1 King size bed & 2 extra single sofa beds
Bath: Marble bathroom with one washbasin, hydromassage bathtub & separate shower cabin
Pool: Private swimming pool up to 18m²
Specials: Private gazebo. Private entrance courtyard. Sun beds and umbrella. Outdoor furniture for dining and lounging. Direct access to the beach.





Famous Class

PRESIDENTIAL VILLA

SEA VIEW, PRIVATE POOL *Refreshed*

Location: Beachfront

View: Panoramic Sea View

Size: Indoor: 164 sq.m., outdoor: 63 sq.m.

Layout: Separate rooms on 2 levels. Upper floor: 2 Bedroom Suites & 2 Balconies with furnished sitting area. Ground Floor: extended lounges, living/dining area & fully furnished veranda with sofas and dining table.

Sleeps: 4 adults

Beds: 2 King size beds

Bath: 1 Master marble bathroom with hydromassage bathtub, 2 washbasins & separate WC. 2nd bathroom: marble bathroom with hydromassage bathtub, 2 washbasins. 3rd bathroom: marble bathroom with one washbasin

Pool: Private swimming pool 23m²

Specials: Private gazebo. Cosmetic box. Padded sun beds and umbrella. Direct access to the beach.





Famous Class

NEW CRETA PALACE 8 BEDROOM MANSION

Location: Villas area, **View:** Panoramic Sea, **Size:** 350m², Outdoor 210 m²

Layout: Separate rooms. 6 Bedroom Bungalow Suites, 2 Junior Bungalow Suites & spacious dining and living areas.

Sleeps: 16 adults + 10 childrens

Beds: 8 King size beds & 10 single sofa beds

Bath: 4 Master marble bathrooms with hydromassage bathtub, 2 washbasins, separate WC, shower room. 2 bathrooms: two washbasins & walk-in shower & 2 bathrooms: 1 washbasin & walk-in shower

Pool: 4 Private swimming pools 18-20 m² each

Special: Private 4 Gazebo in front of Private Garden & 4 Gazebo on the beach. Padded sun beds and umbrella. Private open-air courtyard in the upper floor with large terraces with pergolas, dining tables and deckchairs. Direct access to the beach. Butler Service.

Free barbeque dining experience in our Amalthea's Botanic Garden.

Free Transfer with Luxury Bus or Minibuses.



First floor



Ground floor

