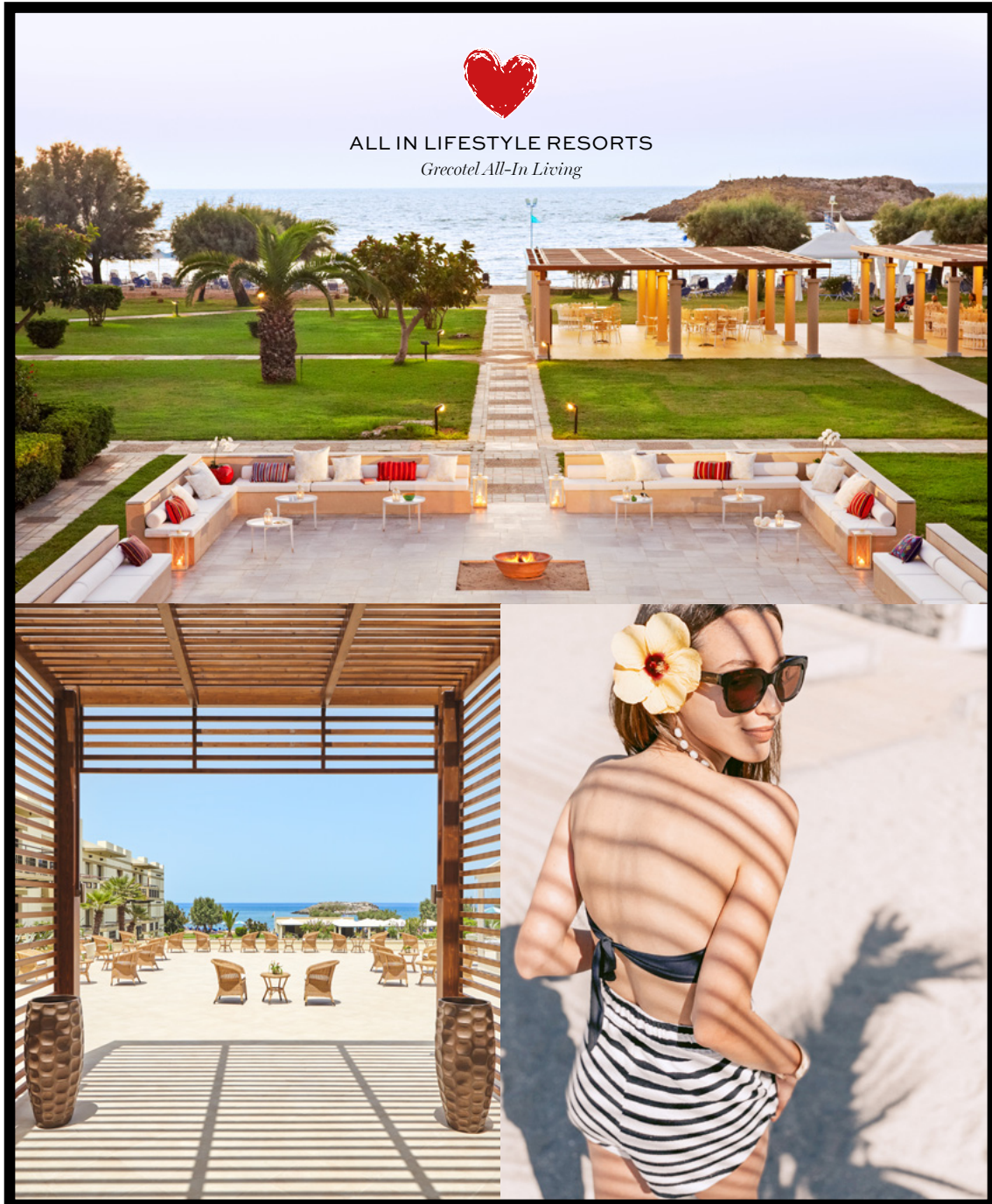




CRETE

MELI PALACE

GRECOTEL ALL IN LIFESTYLE RESORT



A magical Palace revels in a beautiful seaside setting overlooking a tiny island. Escape to this exotic beachfront paradise, surrounded by palm trees, wild figs, hibiscus, cacti and olive trees. Whether you want to explore the cultural and historical attractions of Crete, or you'd rather just explore the cocktail menu under the starry sky, Meli Palace strikes the perfect holiday balance in eastern Crete and makes an idyllic escape for families and couples alike.

MELI PALACE

GRECOTEL ALL IN LIFESTYLE RESORTS



GRECOTEL HOTELS & RESORTS IS DELIGHTED TO INVITE YOU TO ITS "LIFESTYLE ALL-INCLUSIVE RESORTS", VILLAGE STYLE RESORTS RIGHT ON A NATURAL BEACH NEXT TO FARMERS FIELDS, WITH FAMILIES IN MIND.

IDEAL FOR All ages

LOCATION

Lying on a picturesque beach, Meli Palace is located 2km from Sissi village and 5km from the famous Ancient Minoan Palace of Malia.
• Heraklion town: 45km • Heraklion Airport: 40km • Heraklion Port: 45km

ACCOMMODATION

- Total Rooms 156

BEACH & POOLS

Directly on a 110 m long and approx. 20 m wide sandy beach • 1 Fresh water pool • 1 Fresh water children's pool

FEATURES

- Elixir Spa • Fitness room with state-of-the-art cardio fitness equipment • Sauna • Grecoland Kids Club • Open-air Amphitheatre
- Sitting areas & Terraces

AWARDS

- Green & Fair Hotel 2023 by TUI • Trip Advisor (EXCELLENCE AWARD 2022) • Holiday check recommended • TUV Austria Hellas - HACCP certified • TUV Austria Hellas - ISO 10002 • Booking.com - Guest Review Award • TUI TOP QUALITY 2020 TRAVELIFE • TRAVELIFE GOLD for sustainability in tourism

MEAL PLAN

ALL INCLUSIVE: A lifestyle all-inclusive concept with families in mind, including lavish breakfast, lunch and dinner, Greek and international dishes, snacks, ice cream, alcoholic and soft drinks, hot and cold beverages, as well as beer and wine served at lunch and dinner.

UNLIMITED DINING

BREAKFAST: American Buffet with fitness food corner and local corner with traditional products (in the main restaurant). Late Continental Breakfast.

LUNCH: Self-service Buffet in the main restaurant. Hot Main Courses and Desserts. Live Cooking Show. Every Sunday Greek Lunch. Wine, Beer, Water and Refreshments are all free of charge.

DINNER: Self-service buffet style: cold & hot starters, soup, salads, main courses and a variety of cheese and desserts. Live cooking show. Wine, Beer, Water and Refreshments are all free of charge. Weekly theme evenings at no extra cost. Dinner a la carte (Mediterranean cuisine-set menu) at the Snack Bar "To Nissi" with prior reservations at

the reception. All food & all-inclusive drinks are included.

SNACKS: At selected hours & bars during the day, midnight snack

COFFEE & DESSERTS: Served at the Snack Bar (cakes at selected hours)

UNLIMITED DRINKS: International (labels) and local alcoholic and non-alcoholic drinks from 10.00-01.00 hrs

KIDS DINING: At the main Restaurant, from morning to evening, the extended buffet offers a constant supply of fresh, tempting food and drinks exclusively for our little guests!

RESTAURANTS & BARS

MELISSA RESTAURANT

The resort's mediterranean buffet restaurant. It is a celebration of different cuisines freshly prepared with live cooking and daily themed dinners. B L D

SNACK BAR "TO NISSI"

An all-day beach place, with shaded lounging and various snacks. D

POOL BAR

Hot beverages, soft drinks, water, beer, wine, alcoholic & non-alcoholic drinks, ice cream.

LOUNGE BAR "MELI PALACE"

Soft drinks, water, beer, wine, alcoholic & non-alcoholic drinks, cocktails, long drinks, hot beverages.

NEW Vegan / Vegetarian / Gluten Free options in all restaurants.

ALL INCLUSIVE DINING-TERMS & CONDITIONS

All Inclusive is valid in all available Restaurants & Bars and does not apply to in-room dining. One a la carte meal is included once during stay. Restaurants are subject to availability and are subject to change due to seasonality, weather or other unforeseen circumstances. Restaurants can be closed on special occasions by the hotel. Operating days and hours may vary during season. Reservations for all meals are required. All Inclusive Board ends at 5 p.m. on the departure day.

KIDS

Kids Go Free Children up to 12 years old enjoy free kids dining, free Grecoland kids' programme, GrecoTeens and outdoor creative activities.

Greco baby, 0-3 yrs. Pre-arrival order of baby equipment, baby food order. • Baby-sitting, extra charge

Grecoland Kids Club, 4-12 yrs. 6 times per week (10.00 - 13.00 & 15.00 - 18.00). Children under 4 yrs. must be supervised at all times by a parent or guardian.

Greco teens Activities, 13+ yrs. From mid June – mid September

All Inclusive Kids Dining, 3-12 yrs. Kids menu on request

FITNESS & ACTIVITIES

Gymnastics Aerobic, Pilates, Aqua Gym

Sports 1 Tennis Court with Astroturf, Mini Soccer 5x5, 1 Multipurpose Court, Beach volley, Table Tennis, Water Polo, Darts, Boccia, Pedalboat & Canoes, Tournaments. Extra Charge: Mountain biking, Tennis Lessons

Outside The Hotel Extra charge: Crete Golf Club (20 km), Banana-Windsurfing-Water Ski-Rings (6km).

Shopping • SunStores Mini Market/Boutique

Evening Entertainment Hotel Entertainment Shows, Live Music Performance

ENVIRONMENTAL POLICY

• Waste Water Treatment Plant • Recycling • Energy Saving Light Bulbs
• Ecological activities and Information for guests

SERVICES

WiFi Free, in all hotel indoor & outdoor public areas (lobby, restaurants, pools and beach).

New GrecoTel Mobile App proposes a world of information regarding your stay, online-reservation at the à la carte restaurants and services in and out of the hotel.

24h WhatsApp Concierge Designated staff members are at call on WhatsApp, to assist guests on everything they may desire.

Multilingual personnel English, German, Russian, French, Greek

Medical Services 24hr Medical cover, Doctor on call -extra charges may apply depending on guests' travel insurance. • Medical center (24hrs) at 6km • Pharmacy at 2km • Hospital at 28km

Transport • Car rental at the Reception • Public transport bus stop at the hotel entrance

Taxi service (on request): • to Sissi Village (2km) • to Ancient Palace of Malia (5km) • to Heraklion Airport (40km) • to Heraklion Port (45km)

Money All major Credit Cards are accepted • Nearest ATM at 2km

Voltage Current 220V.

Mobility Impaired Guests Due to hotel's layout most departments and rooms are not accessible to persons with mobility problems. There are no specific rooms for mobility impaired guests.

Animals Pets are not allowed due to lack of private gardens. Service animals are allowed to accompany their handler in all hotel premises. View pets policy at grecohotel.com/pets-policy

Official Hotel Categorization Four star Resort

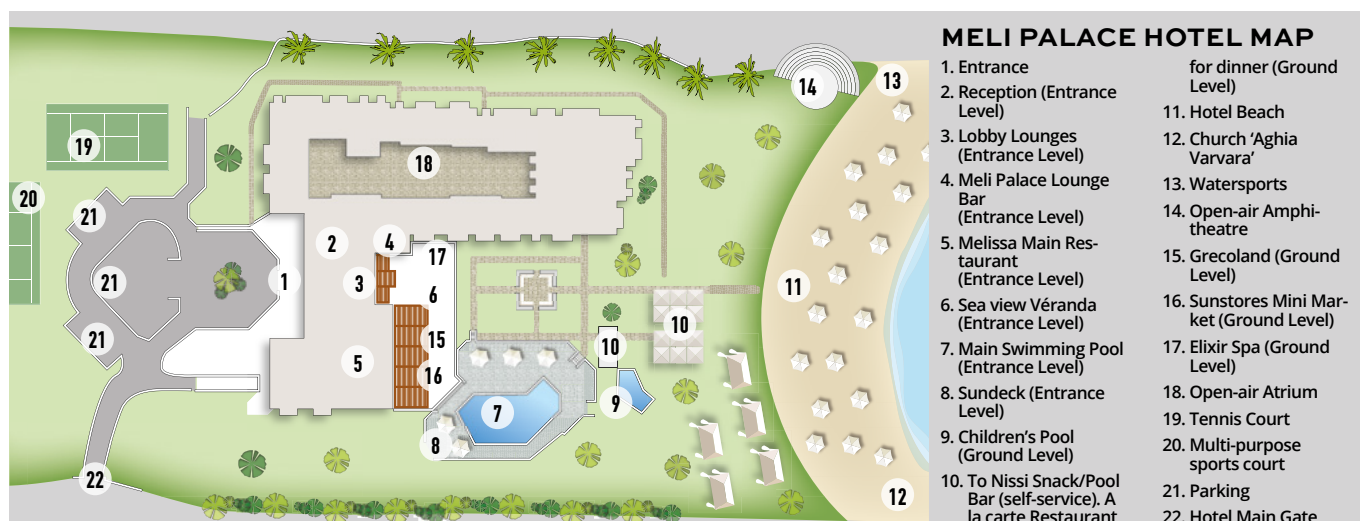
SPA & WELLNESS

The sparkling waterfall entry gives the first impression of the refreshing spa. Facilities include sauna, hydromassage bathtub, fitness gallery and changing rooms. The golden relaxing lounges with low lighting and chakra-balancing music have fire elements to light the spirits.

Spa Facilities 315m² Elixir Spa • Sparkling waterfall entrance • Golden relaxing lounges with low lighting, chakra-balancing music and fire elements • Specially designed body massages • Sauna • Hydromassage bathtub • 2 Private Massage Rooms • Beauty Salon offering facial treatments, manicures & pedicures • Changing Rooms

Gym Operation hours: 10:30 – 19:00 Fitness room with fitness equipment including: 2 treadmills, 1 recumbent bike, 1 elliptical cross-trainer, 1 adjustable Ab Bench, 1 Ab & Back Extension Bench, 1 adjustable Utility Bench, 1 Press & Overhead Press machine, 1 Core & Leg Curl/Leg Extension machine, 1 two tier-dumbbell rack with 2 sets of dumbbells & exercise mat

Contact details GR-724 00, Aghia Varvara Sissi Lasithiou, Crete
TEL.: (+30) 28410 71502 E-mail: reservations.ml@grecohotel.com
melipalace.com



MELI PALACE HOTEL MAP

- | | |
|---|--|
| 1. Entrance | for dinner (Ground Level) |
| 2. Reception (Entrance Level) | 11. Hotel Beach |
| 3. Lobby Lounges (Entrance Level) | 12. Church 'Aghia Varvara' |
| 4. Meli Palace Lounge Bar (Entrance Level) | 13. Watersports |
| 5. Melissa Main Restaurant (Entrance Level) | 14. Open-air Amphitheatre |
| 6. Sea view Veranda (Entrance Level) | 15. Grecoland (Ground Level) |
| 7. Main Swimming Pool (Entrance Level) | 16. Sunstores Mini Market (Ground Level) |
| 8. Sundeck (Entrance Level) | 17. Elixir Spa (Ground Level) |
| 9. Children's Pool (Ground Level) | 18. Open-air Atrium |
| 10. To Nissi Snack/Pool Bar (self-service). A la carte Restaurant | 19. Tennis Court |
| | 20. Multi-purpose sports court |
| | 21. Parking |
| | 22. Hotel Main Gate |

ACCOMMODATION CHART

All room types include:

- Balcony/terrace
- Bath/W.C.
- Hairdryer
- Toiletries
- Sat TV
- Air Conditioning/ Heating
- Refrigerator
- Free Kettle (water boiler) and tea/coffee making facilities
- Telephone
- Safe deposit box

ACCOMMODATION LAYOUTS & PHOTOS ARE SAMPLES AND MAY VARY DEPENDING ON THE POSITION WITHIN THE HOTEL. MEASUREMENTS ARE APPROXIMATE TO THE NEAREST m²

| ROOM TYPES | LOCATION | SIZE | SLEEPS | VIEW |
|-------------------------|---------------|------------------|-----------------------------|-------------------------|
| Double/Triple Guestroom | Main building | 24m ² | 3 adults/2 adults + 1 child | Sea, Side Sea or Garden |
| Family Guestroom | Main building | 24m ² | 2 adults + 2 children | Garden or Sea |
| Deluxe Guestroom | Main building | 32m ² | 2 adults | Side Sea View |
| Family Suite | Main building | 50m ² | 2 adults + 2 children | Side Sea |
| One Bedroom Suite | Main building | 55m ² | 2 adults + 2 children | Garden |



View more details & photos about facilities, services & room details online at melipalace.com



DOUBLE/TRIPLE GUESTROOM SEA, SIDE SEA & GARDEN VIEW

Location: Main Building, Ground, 1st, 2nd Floor **View:** Sea, Side Sea and Garden view

Size: Indoor: 24 sq.m., outdoor: balcony: 3-6 sq.m./terrace: 7-10 sq.m.

Layout: Open plan

Sleeps: 3 adults or 2 adults +1 child

Beds: Double Bed or Twin beds & 1 extra single bed

Bath: Bathroom with one washbasin & bathtub



DELUXE GUESTROOM SIDE SEA VIEW

Location: Main Building, Ground Floor

View: Side Sea View

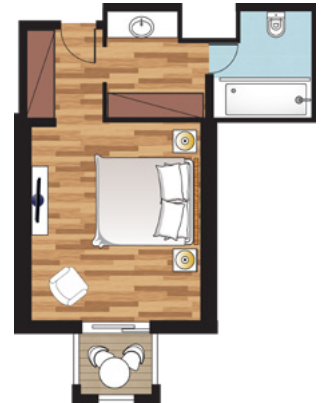
Size: Indoor: 32 sq.m., outdoor: terrace: 8,70 sq.m.

Layout: Open Plan **Sleeps:** 2 adults

Beds: 1 King Size Bed

Bath: Generous spa inspired marble bathroom with one washbasin & walk in shower.

Specials: Parquet floors. Ample wardrobes.



FAMILY ROOM

Location: Main Building, Ground or 1st Floor

View: Garden or Sea View

Size: Indoor: 24 sq.m., outdoor: balcony: 3-6 sq.m./terrace: 7-10 sq.m.

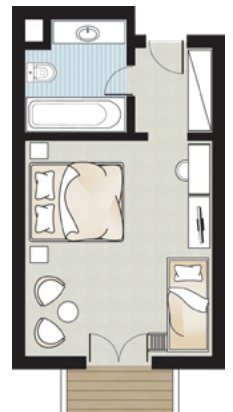
Layout: Open plan

Sleeps: 2 adults + 2 children

Beds: Double bed or Twin beds & 1 bunk bed

Bath: Marble bathroom with one wash basin & bathtub

Special: Garden or Sea View rooms ground floor or with balcony



FAMILY SUITE SIDE SEA VIEW

Location: Main Building, Ground Floor

View: Side Sea View

Size: Indoor: 50 sq.m., outdoor: 14,80 sq.m.

Layout: Master bedroom & separate living/sleeping area

Sleeps: 2 adults + 2 children

Beds: 1 King Size Bed & 2 single sofa beds

Bath: Marble spa inspired bathroom accessible from both rooms



1-BEDROOM SUITE GARDEN VIEW

Location: Main Building, Ground Floor

View: Garden View

Size: Indoor: 55 sq.m., outdoor: 14,80 sq.m.

Layout: Master bedroom & separate living/sleeping area

Sleeps: 2 adults + 2 children

Beds: 1 King Size Bed & 2 single sofa beds

Bath: Marble bathroom with two washbasins and walk-in shower, his and hers vanity units

